

Assistance productivity

ASSISTANCE PRODUCTIVITY	2019	2020	2021
Outpatient services	288,179	159,459	200,776
Surgeries	20,402	12,233	14,790
Admissions	21,936	12,510	15,861
Solid organ transplantation (heart, kidney, and liver)	16	30	44
Bone tissue transplantation	152	112	122
Bone marrow transplantation	62	61	73
Exams (laboratory, imaging, and graphic methods)	979,513	786,943	974,705
Hospital infection rate (%)	4.04%	4.35%	2.84%
Hospital mortality (%)	0.77%	0.87%	0.79%
Hospitalization average length (days)	4.67	6.06	5.13



Hospitalization by specialty

SPECIALTY	2019	2020	2021
Allergy and Immunology	139	86	238
Cardiology	897	612	646
Cardiovascular Surgery	138	66	132
Endocrinology	130	68	91
Gastroenterology	1,454	751	1,005
Hematology	448	290	245
Hepatology	-	18	9
Infectious Disease	452	353	253
Intensive Therapy	15	10	23
Neonatology	33	2	3
Nephrology	570	529	351
Neurology/Neurophysiology	1,487	1,073	1,207
Neurosurgery	362	328	254
Nutrology	17	7	8
Oncology	645	584	482
Ophthalmology	61	10	31
Orthopedics	1,851	1,085	1,355
Otorhinolaryngology	1,414	456	686
Pediatric Surgery/Head and Neck/Digestive System	6,184	2,776	3,124
Pediatrics	4,992	3,041	5,446
Plastic Surgery	70	34	14
Pulmonology/Bronchoscopy	306	108	75
Rheumatology	271	223	183
TOTAL	21,936	12,510	15,861



Outpatient services

SPECIALTY	2019	Total attendances in 2020	Remote assistance in 2020	Total attendances in 2021	Remote assistance in 2021
Adolescence/Pediatrics	1,074	276	1	488	2
Anesthesiology	11,678	5,096	1,310	7,416	5,376
Cardiology	8,536	4,054	-	5,394	143
Cystic Fibrosis	288	507	9	1,072	-
Dermatology	1,429	733	-	982	4
Endocrinology	3,051	1,738	-	2,598	-
Gastroenterology	2,982	1,800	473	2,133	260
Hand Surgery	1,938	698	-	886	-
Head and Neck Surgery	92	68	-	136	-
Hematology/BMT	3,482	1,850	18	2,688	73
Hepatology	427	401	-	720	3
Immunology	159	23	-	194	33
Infectious Disease	566	341	-	497	28
Interventional Radiology	-	-	-	18	-
Nephrology/Kidney Transplantation	6,018	3,080	16	4,300	70
Neurology	4,937	3,249	1,237	3,670	871
Neurosurgery	1,885	555	-	807	-
Nutritional Support/Nutrology	550	1,022	26	1,000	16
Oncology	4,293	3,717	-	4,104	21
Ophthalmology	4,124	989	-	2,114	-
Orthopedics	19,649	10,755	59	13,040	53
Otorhinolaryngology/Hearing Health/Thoracic Surgery	4,813	2,768	22	3,552	3
Pediatric Surgery/Urology	12,971	4,678	-	6,973	7
Plastic Surgery	179	31	-	-	-
Psychiatry	-	-	-	729	-
Pulmonology	4,638	1,853	163	2,337	54
Rare Diseases/Genetics	418	841	339	1,279	173
Rheumatology	1,966	1,167	-	1,399	13
TOTAL	102,143	52,290	3,673	70,526	7,203

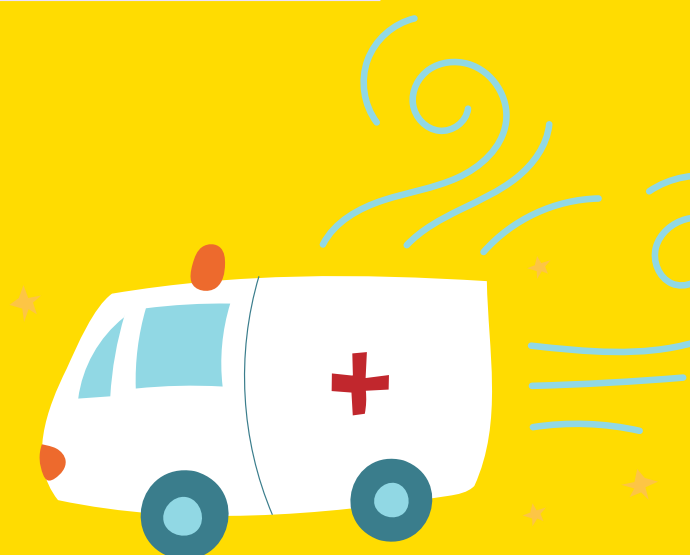
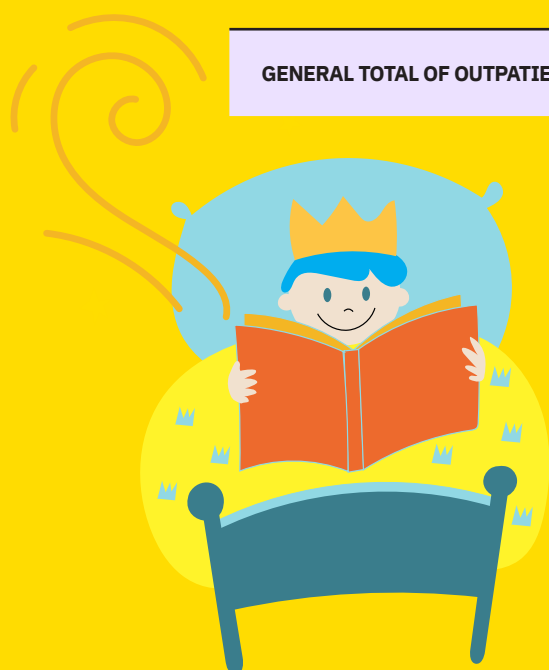
Outpatient services

EMERGENCY	2019	2020	2021
Clinical Emergency	115,295	49,716	82,737
Orthopedic Emergency	8,048	5,453	6,612
Specialist and Nursing	67	29	34
Surgical Emergency	5,895	4,415	5,090
TOTAL	129,305	59,613	94,473

THERAPIES AND TREATMENTS	2019	2020	2021
Chemotherapy	3,467	2,987	2,637
Hemodialysis	4,313	4,686	4,752
Physiotherapy	7,442	3,185	4,338
Voiding Reeducation	1,032	145	-
TOTAL	16,254	11,003	11,727

PREVENTION PROCEDURES	2019	2020	2021
Intra and out-of-hospital vaccines	40,477	36,553	24,050

GENERAL TOTAL OF OUTPATIENT SERVICES	288,179	159,459	200,776
---	----------------	----------------	----------------



Specific diagnostic and therapeutic exams and services

EXAMS	2019	2020	2021
Clinical Analysis Laboratory	836,513	694,837	858,243
IMAGE	2019	2020	2021
MRI	4,123	3,481	3,885
Tomography	6,166	5,297	7,390
Ultrasound	20,493	19,281	19,626
X-ray	80,490	49,698	66,222
IMAGE CENTER SUBTOTAL	111,272	77,757	97,123
Echocardiogram	7,733	5,063	6,472
IMAGE SUBTOTAL	119,005	82,820	103,595

GRAPHIC METHODS	2019	2020	2021
Electrocardiography	6,826	2,291	3,860
Electroencephalogram	3,240	2,832	2,387
Electrophysiology	4,189	1,626	4,028
GRAPHIC METHODS SUBTOTAL	14,255	6,749	10,275

SPECIFIC DIAGNOSTIC AND THERAPEUTIC SERVICES	2019	2020	2021
Endoscopy	1,585	825	1,074
Hemodynamics	412	247	297
Pulmonology Laboratory	7,563	1,415	1,058
Urodynamics	139	38	112
SPECIFIC DIAGNOSTIC AND THERAPEUTIC SERVICES SUBTOTAL	9,699	2,525	2,541
Electroneuromyography	41	12	51

TOTAL OF EXAMS	979,513	786,943	974,705
----------------	---------	---------	---------

